

DATE	NAME	LIC. NO.
SEPT 2013	BRENDAN J. NALLY	31662
JAN 2014	BRENDAN J. NALLY	31662
JAN 2015	BRENDAN J. NALLY	31662
JAN 2016	BRENDAN J. NALLY	31662
JAN 2017	BRENDAN J. NALLY	31662
JAN 2018	BRENDAN J. NALLY	31662

BOROUGH OF RARITAN
SOMERSET COUNTY

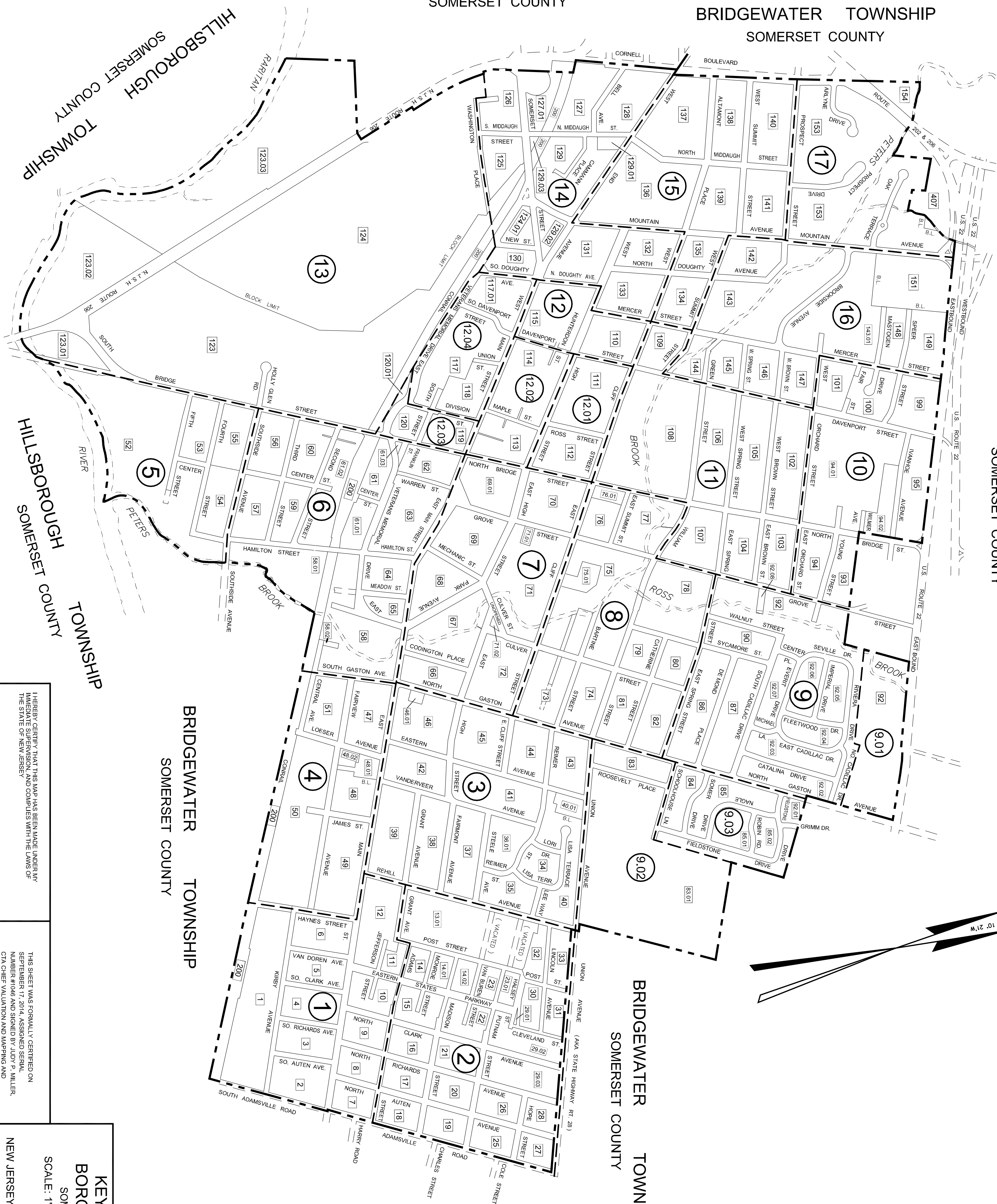
BRIDGEWATER TOWNSHIP
SOMERSET COUNTY

BRIDGEWATER TOWNSHIP
SOMERSET COUNTY

BRIDGEWATER TOWNSHIP
SOMERSET COUNTY

BRIDGEWATER TOWNSHIP
SOMERSET COUNTY

BRIDGEWATER TOWNSHIP
SOMERSET COUNTY



- LEGEND**
- KEY SHEET**
- ① TAX MAP SHEET NUMBER
 - 200 BLOCK NUMBER
 - MUNICIPAL BOUNDARY
- DETAIL SHEET**
- ① TAX MAP SHEET NUMBER
 - 200 BLOCK NUMBER
 - 8.02 LOT NUMBER
 - ||||| ASSESSMENT LINE

NOTES:

THE AREAS, BOUNDARIES AND DIMENSIONS SHOWN ON THIS TAX MAP ARE DERIVED FROM GROUND SURVEYS, AERIAL SURVEYS AND RECORDED PLANS. MAPS, DEEDS AND WILLS AND ARE TO BE USED FOR ASSIGNMENT PURPOSES ONLY.

THIS MAP HAS BEEN REPRIMA USING COMPUTER AIDED DRAFTING / DESIGN (CAD) BASED ON THE MAP PREPARED BY THOMAS F. BLISS, P.E. & L.S. LICENSE NO. 7003, DATED 10-4-03.

THIS TAX MAP SUPERSEDES THE TAX MAP APPROVED OCTOBER 14, 1993 SERIAL NO. 401.

I HEREBY CERTIFY THAT THIS MAP HAS BEEN MADE UNDER MY IMMEDIATE SUPERVISION AND COMPLIES WITH THE LAWS OF THE STATE OF NEW JERSEY

BRENDAN J. NALLY P.L.S. LIC. NO. G531862 DATE

THIS SHEET WAS FORMALLY CERTIFIED ON SEPTEMBER 17, 2014, ASSIGNED SERIAL NUMBER #1060 AND SIGNED BY JUDY P. MILLER, C.I.A. CHIEF VALUATION AND MAPPING AND ALSO SIGNED BY SUE DAVISON, C.I.A. SUPERVISING FIELD REP.

KEY MAP - INDEX SHEET

BOROUGH OF SOMERVILLE
SOMERSET COUNTY, NEW JERSEY

SCALE: 1"=500' DATE: SEPTEMBER, 2013

BRENDAN J. NALLY
NEW JERSEY LICENSED LAND SURVEYOR NO. 31662

SOMERVILLE MUNICIPAL OFFICES
25 WEST END AVENUE, SOMERVILLE NJ 08876
TO SHOW CONDITIONS AS OF JANUARY 2014

KEY SHEET