

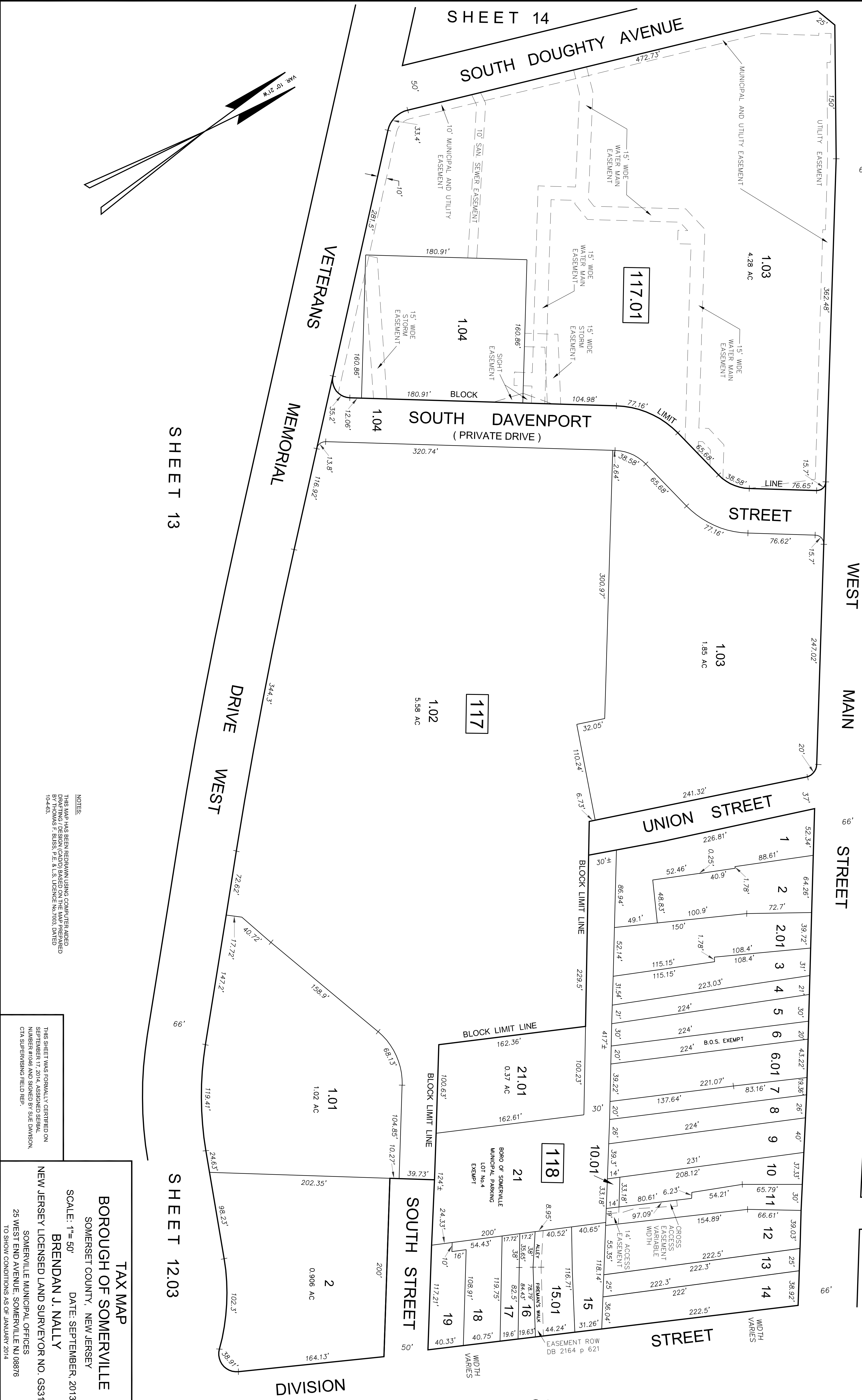
REVISIONS		
DATE	NAME	LIC. NO.
SEPT. 2013	BRENDAN J. NALLY	31662
JAN. 2014	BRENDAN J. NALLY	31662
JAN. 2015	BRENDAN J. NALLY	31662
JAN. 2016	BRENDAN J. NALLY	31662
JAN. 2017	BRENDAN J. NALLY	31662

SHEET 12

DAVENPORT ST.

SHEET 12.02

MAPLE ST.



SHEET 13

SHEET 12.03

SHEET 12.03

12.04

12.04

NOTES:  
THIS MAP HAS BEEN REDRAWN USING COMPUTER AIDED  
DRAWING SOFTWARE AND IS BASED ON THE RECORD  
DEEDS AND PLATS ON FILE IN THE OFFICE OF THE  
CLERK OF SUPERIOR COURT, COUNTY OF SOMERSET,  
NEW JERSEY.

THIS SHEET WAS FORMALLY CERTIFIED ON  
SEPTEMBER 17, 2014, ASSIGNED SERIAL  
NUMBER #1046 AND SIGNED BY SUE DAVISON,  
CIVIL SUPERVISING FIELD REP.

**TAX MAP**  
**BOROUGH OF SOMERVILLE**  
 SOMERSET COUNTY, NEW JERSEY  
 SCALE: 1" = 50'      DATE: SEPTEMBER, 2013  
**BRENDAN J. NALLY**  
 NEW JERSEY LICENSED LAND SURVEYOR NO. GS31662  
 SOMERVILLE MUNICIPAL OFFICES  
 25 WEST END AVENUE, SOMERVILLE NJ 08876  
 TO SHOW CONDITIONS AS OF JANUARY 2014